

## Genie M1024

Area Scan Monochrome Cameras



Genie M1024

### Key Features

- Uses standard PC and server Ethernet ports & hardware
- Supports cable lengths up to 100 m (CAT-5e or CAT-6)
- Simplified set-up with field proven Sapera Essential software featuring CamExpert
- Engineered to accommodate industrial environment with a Ruggedize, screw mount, RJ-45 connector
- Small compact form factor

### Programmability

- Achieve 20 fps in full resolution
- Higher frame rates achievable in partial scan mode
- Global electronic shutter with exposure control
- Programmable LUT
- On-board flat-field correction
- 2x2 Binning

### Typical Applications

- Electronics manufacturing inspection
- Industrial metrology
- Intelligent traffic systems

### Overview

## Small compact GigE Vision camera with uncompromised image quality.

The Genie M1024 uses a Sony CCD, monochrome sensor with a resolution of 1024 x 768.

Operating at 20 frames per second at full resolution, the Genie M1024 takes advantage of gigabit Ethernet technology, transmitting data over standard CAT-5e and CAT-6 cables to distances of up to 100 m. Like all Genie cameras, the M1024 is based on AIA (Automated Imaging Association) GigE Vision Standard to directly link the camera to a PC.



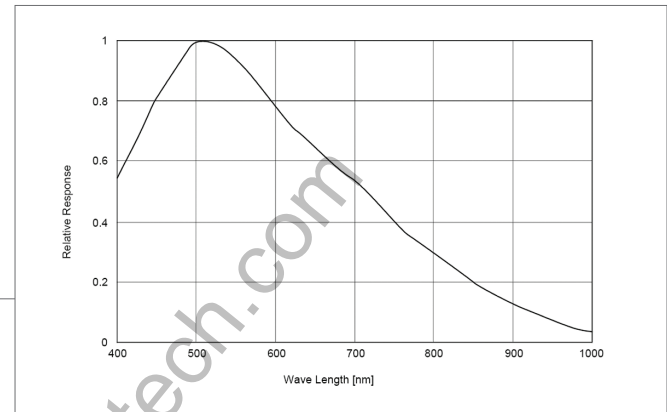
### Specifications

Active Resolution	1024 x 768
Frame Rate	20 fps
Pixel Size	4.65 $\mu$ m
Data Format	8 and 10-bits
Exposure Control	Programmable, or via External Trigger
Dynamic Range	57 dB
Nominal Gain Range	-6 dB to +12 dB
Output	Gigabit Ethernet, also supports 100 Mbps
I/O Ports	2 opto-isolated input, 2 opto-isolated output,
Lens Mount	C or CS-mount
Size	44 mm x 29 mm x 67 mm (including lens adapter)
Mass	~115 g (without lens)
Operating Temp	0°–45°C
Power Supply	12 V
Power Dissipation	4W
Data Connector	Standard or Screw mount RJ-45
Power and I/O	Hirose 12-Pin
Software Platform	DALSA Sapera LT
GigE Vision Compliant	Yes
Regulatory Compliance	FCC Class A, CE, RoHs 2002/95/EC
Part Number	CR-GEN0-M102x

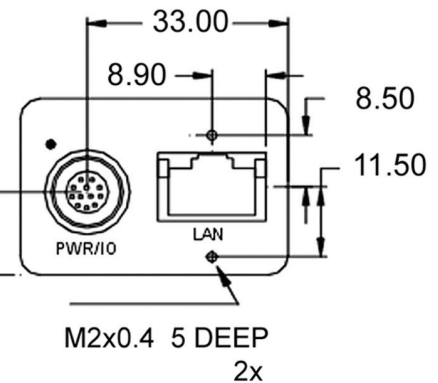
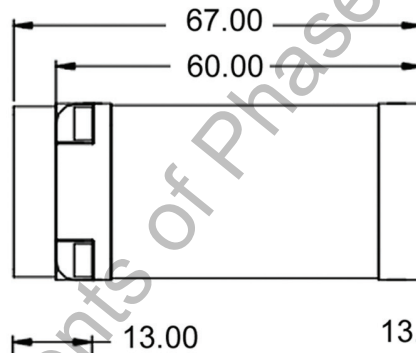
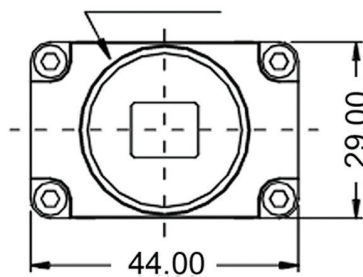
## Genie M1024

Area Scan Color Cameras

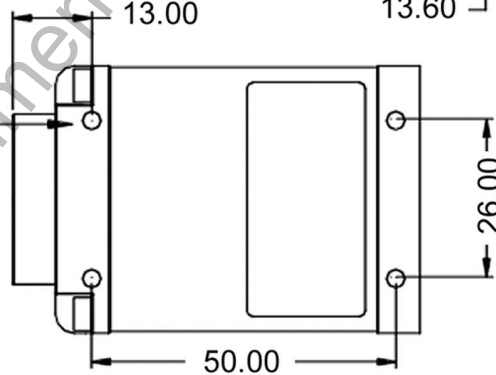
*All Genie cameras feature value added functionality designed specifically for imaging and machine vision applications. All features are easily accessible with DALSA's advanced software tools. These tools deliver superior image capture, performance, and control.*



C or CS-mount: 1" diameter  
32 threads per inch



M3x0.5 4 DEEP  
8x



TOLERANCE in mm

.XX ± .30

.X ± .5