

# Spyder 3 GigE Vision

Dual Line Scan Cameras



## Overview

### 3x the responsivity of its predecessor and a Gigabit Ethernet interface.

The Spyder 3 GigE Vision (GEV) camera is our latest GigE camera. The GEV interface eliminates the need for a frame grabber, resulting in significant system cost savings. The Spyder 3 GEV is also our latest dual line scan camera. When operating in high sensitivity (dual line scan) mode, the Spyder 3 GEV has 3x the responsivity of the Spyder 2 line scan camera. At its core is the latest dual line scan technology that achieves unprecedented responsivity and throughput rates of 80 megapixels per second. The Spyder 3 GEV is fully programmable, offering precise control over key performance variables such as gain and offset.

## Key Features

- Broadband responsivity up to 2064 DN/(nJ/cm<sup>2</sup>) @ 0dB gain
- GigE Vision interface
- High or low speed (40 or 80 MHz)
- Up to 68 kHz line rates
- Data transmission up to 100m

## Programmability

- Graphical user interface
- Programmable gain, offset, exposure, line rates, trigger mode, and camera diagnostics
- Selectable high or low sensitivity mode
- Flat field correction

## Typical Applications

- FPD inspection
- Pick-and-place
- Container inspection
- Wood/tile/steel inspection
- 100% print inspection
- Postal sorting
- Glass bottle inspection
- Industrial metrology
- Food inspection
- Web inspection

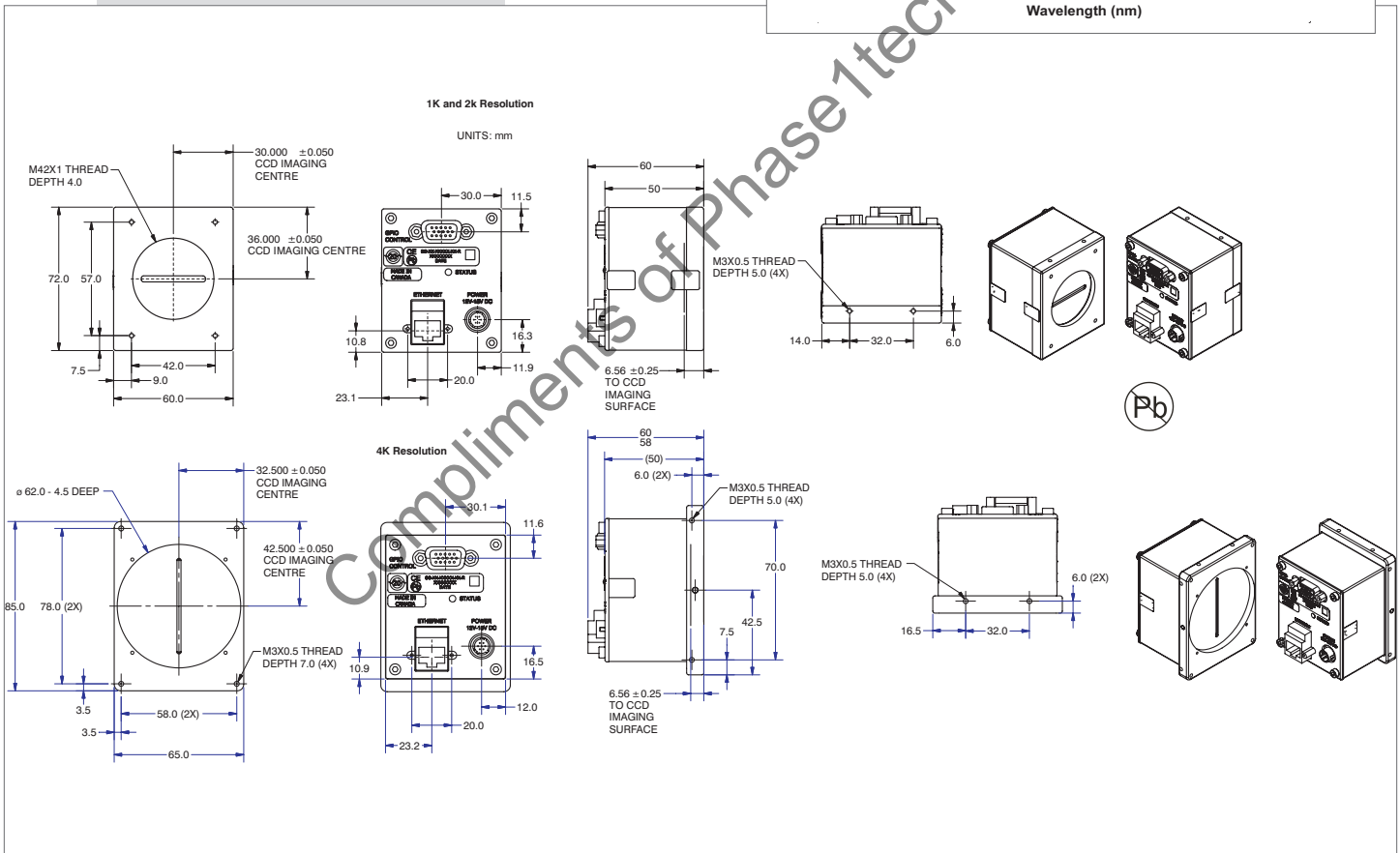
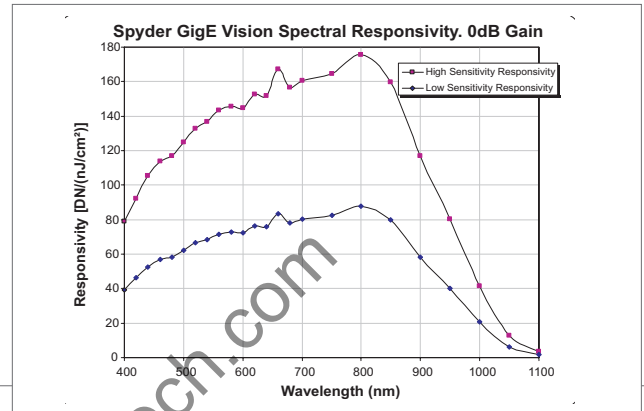
## Specifications

Resolution	1024 / 2048 / 4096
Data Rate	80 / 40 megapixels/second
Max. Line/Frame Rate	68 / 36/ 18 kHz
Pixel Size	14 $\mu$ m / 10 $\mu$ m (4k)
Data Format	8, 12 bit
Output	Gigabit Ethernet
Lens Mount	M42 x 1, C, F mount
Responsivity	Up to 2064 DN/(nJ/cm <sup>2</sup> ) @ 0dB
Dynamic Range	Up to 1400 : 1
Nominal Gain Range	$\pm$ 10 dB
Size	72 (h) x 60 (w) x 50 (l) mm (1k and 2k) 85 (h) x 65 (w) x 50 (l) mm (4k)
Mass	< 300 g
Operating Temp	0 °C to 50 °C
Power Supply	12 V to 15 V
Power Dissipation	<8.5 W
Regulatory Compliance	CE, RoHS
Control	RJ-45, 15-pin mini-DSUB
Data	RJ-45
Power	Hirose 6 HR10 pin
Example Part Number	SG-11-02K80-00-R

# Spyder 3 GigE Vision

## Dual Line Scan Cameras

The Spyder 3 GigE Vision sports 3x the responsivity of the Spyder 2 while maintaining the same dynamic range. The GigE interface eliminates the frame grabber, reducing system costs.



[www.teledynedalsa.com](http://www.teledynedalsa.com)

### Americas

Boston, USA  
 Tel: +1 978-670-2000  
[sales.americas@teledynedalsa.com](mailto:sales.americas@teledynedalsa.com)

### Europe

Munich, Germany  
 Tel: +49 8142-46770  
[sales.europe@teledynedalsa.com](mailto:sales.europe@teledynedalsa.com)

### Asia Pacific

Tokyo, Japan  
 +81 3-5960-6353  
[sales.asia@teledynedalsa.com](mailto:sales.asia@teledynedalsa.com)

Teledyne DALSA is an international leader in digital imaging and semiconductors and has its corporate offices in Waterloo, Ontario, Canada.

