

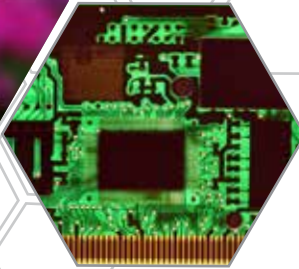
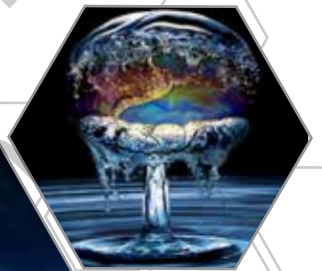
HB-50000-M Monochrome
HB-50000-C Color

*****PRELIMINARY*****



25GIGE BOLT

High Speed 25GigE SFP28 Interface
2.5x the Speed of 10GigE
Cable lengths from 1M to 10KM
No Fiber Converters Needed
No Frame Grabbers
GigE Vision Compliant



GiGE
VISION
GEN<i>CAM

25GIGE CAMERAS

Speed is Everything.

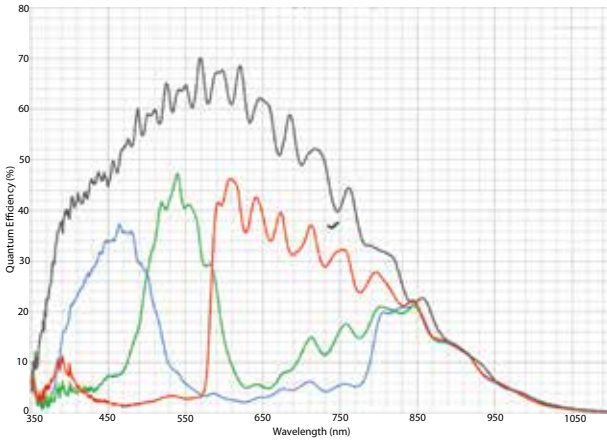
*****PRELIMINARY*****

HB 50000 50MP

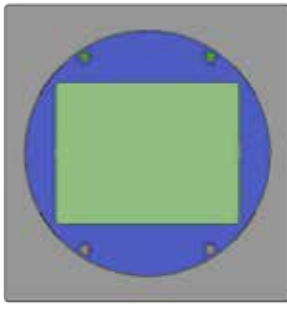
HB-50000-M MONOCHROME / HB-50000-C COLOR



QE & Spectral Response
QE * FF - @550 nm with micro lens



Front View Dimensions



58mm

Side View Dimensions



97mm

60mm

Please refer to 3d Mechanicals available for download on our website for exact measurements

Sensor	Cmosis CMV50000
Resolution	7920x6004
Megapixels	50MP
Sensor Type	35mm CMOS
Max Frame Rate	30fps
Cell Size	4.6µm square
Standard Mount	52mm, M52x1.5x12mm BFL, F-mount Available
Shutter	Global
Bit Depth	8 or 12 Bit
GPIO / Triggering	3 in, 3 out Software, External (Pulse or Edge)
Interface	SFP28 - 25 Gige
Exposure/Integration	100µs-1s
Dynamic Range	64 dB
Monochrome Modes	Mono8, Mono12
Color Modes	RGB8, YUV411, YUV422, YUV444, BGR8
Raw Modes	BayerRG8, BayerRG12
Operating System	Windows 7/8 10, Linux (64bit)
Compliance	CE, FCC, RoHS, WEEE, GigE Vision, GenICam
Power Requirements	9W, 12V
Operating Temperature	0C-45C
Storage Temperature	-30C to +60C
Dimensions & Weight	97x58x60 - 350g
Warranty	2 Years

EMERGENT VISION TECHNOLOGIES

7-11720 Stewart Crescent
 Maple Ridge, B.C. V2X 9E7 Canada
 Ph: 1-866-780-6082
 E-Mail: sales@emergentvisiontec.com
 emergentvisiontec.com

***Preliminary data. Subject to change.**

***all minimum exposure specs can vary from what is listed based on the limitations of each sensor as per notice from the manufacturer.**

