



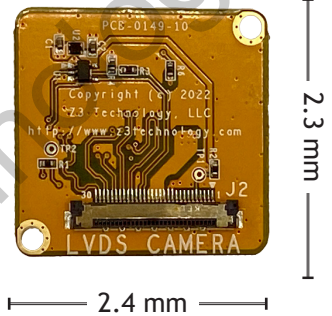
# DRS® Tenum® Digital LVDS Output Board

*Designed for your IR Camera Connection Needs*

**CIB-TEN-10**

- Attaches to the Leonardo DRS® Tenum® or Tamarisk® Camera Body
- LVDS Digital Video Output
- KEL Cable Connection to Z3 Encoders

The CIB-TEN-10 is designed to allow a single cable output to send LVDS digital video to Z3 dual camera or single camera encoders. The KEL connection allows for a single, cable to provide power and transmit camera controls from the encoder to the camera, creating a complete solution to stream and record video from the Tenum® or Tamarisk®.



## Technical

Camera Supported	Leonardo DRS® Tenum® Leonardo DRS® Tamarisk®
Video Output	•LVDS Digital
Interfaces	•KEL cable connection for digital video, power and camera control when connecting to the FV2K-XXA, FSDI-XXA, FV4K-XXA, and Q603-XX Video Encoder.

## Specifications

Camera Interface Board Size	24 x 23 x 24 mm (0.94 x 0.91 x 0.94 in)
Camera Interface Board Weight	3g (0.11oz)
Temperature Range	-40°C to 80°C

## ORDERING OPTIONS

### CIB-TEN-10

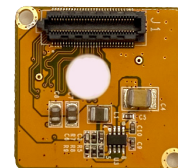
- Camera Interface Board for DRS® Tenum® or Tamarisk®
- Documentation

*Note: DRS® Tenum® and Tamarisk® sold separately\**

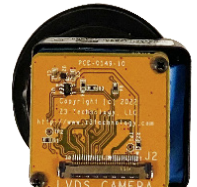
## APPLICATIONS

Inspection  
Security and Surveillance  
Industrial  
Unmanned Systems  
Customized Applications\*

Front view



Back view



When connected to the Tenum®

**\*Contact Z3 Technology for Customized Product Options**

[sales@Z3technology.com](mailto:sales@Z3technology.com)

+1.402.323.0702

[www.Z3technology.com](http://www.Z3technology.com)